

## Frozen Tissue Microarrays (TMAs)

For screening analysis of multiple tissues or disease indications simultaneously, under conditions where tissues are as close as possible to their native state, Asterand provides high quality tissue microarrays (TMAs) prepared from frozen tissues. These arrays are suitable for use in both immunohistochemistry and *in situ* hybridization. We can provide ready-made arrays, or you may choose samples of interest from XpressBANK™ for a custom designed TMA.

EXPERTS IN HUMAN  
TISSUE RESEARCH

### Features of standard Asterand Frozen TMAs

- Frozen tissues, collected under standardised protocols
- Orientation marker cores
- Samples represented in duplicate
- Only tissue samples containing representative structures selected for coring
- Up to a maximum of 72 cores or 36 cases per array
- Suitable for use in immunohistochemistry or *in situ* hybridization
- Complete clinical information for each case
- 1.5mm diameter cores
- Complete Tissue Cross Reactivity arrays available (cTCR)

EXTENSIVE HUMAN  
TISSUE NETWORK

### Additional features of Asterand custom frozen TMAs

- Custom TMAs available to order
- Cores may be taken from our extensive biobank of tumorous, diseased and normal tissues
- Multiple tumor types and diseases available
- Client can select tissues based on gender, age, tumor staging, markers, etc

*\*Asterand can also build TMAs from customer blocks.*

ADVANCE PROMISING  
COMPOUNDS FASTER

### Benefits of using Asterand's Frozen TMAs

- TMAs are hand-made made to ensure optimal quality
- Pathology confirmation of tissue type and diagnosis pre- and post-construction
- Only samples with high levels of morphological preservation selected
- Tissues are selected based on depth to ensure maximal number of sections achievable
- Optimal region for coring identified from H&E

INFORMED  
DECISION MAKING

### Offer to clients

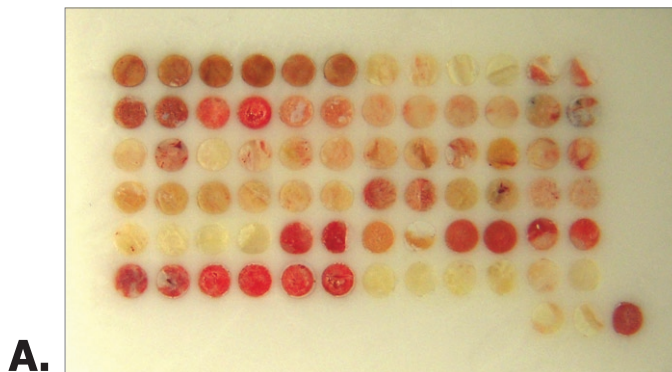
1. Full frozen TMAs or sections may be purchased
2. Asterand also conducts *in situ* hybridization or immunohistochemistry studies on behalf of clients

*\*Asterand also supplies formalin fixed, paraffin-embedded TMAs both off the shelf and on a custom basis.*

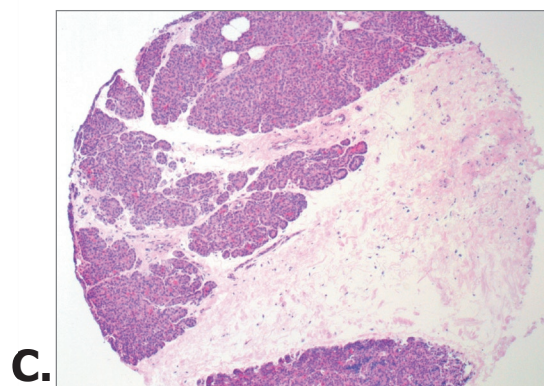
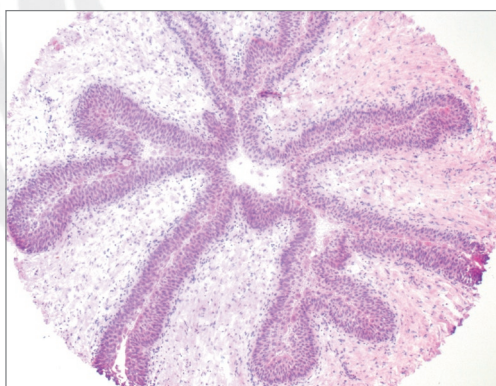
**Note:** Asterand uses Superfrost+ slides to attach sections but cannot guarantee that a full set of cores will be retained during sectioning or upon use.

CONFIDENCE FOR  
CLINICAL SUCCESS

EXPERTS IN HUMAN  
TISSUE RESEARCH



EXTENSIVE HUMAN  
TISSUE NETWORK



ADVANCE PROMISING  
COMPOUNDS FASTER

#### Frozen TMA

Panel (a): A digital photograph showing a frozen TMA block comprising 12 non-diseased tissue types (liver, lung bronchus, lung parenchyma, lymph node, ovary, pancreas, parathyroid, parotid, peripheral nerve, pituitary, placenta, prostate), each in duplicate and taken from three donors. Panels (b, c): representative H&E stained cores taken from ureter (B) and pancreas (C).

INFORMED  
DECISION MAKING

CONFIDENCE FOR  
CLINICAL SUCCESS